

INDIA'S NO **1**

MANUFACTURER OF FLEXIBLE SHAFT COUPLING

ISO 9001-2000 Certified Company



SOHAM ENGINEERS

Great People

Great Brand

Great Company

Great Future

SOHAM ENGINEERS
COMPANY PROFILE



We Soham Engineers are pleased to introduce ourselves as a leading manufacture of Flexible **Shaft Couplings**. These couplings are equivalent to all necessary standards .We have a very skilled manufacturing team with precision SPM's and precise measuring instruments. In responsible response of our valued customers made us grow as we see today. We always believe in **QUALITY MAKES PRODUCT & CUSTOMERS PERFECT**

SOHAM ENGINEERS is a company with little time to look back these days. Growth and change are coming at a rapid pace for this industry leader as it moves and adapts to the enormous opportunities of the 21st Century PRECISION MOTION TRANSMITTING COUPLINGS market place. But that doesn't means there's little by way of past accomplishment. In fact, it is precisely SOHAM Engineer's' long and proud record of achievement that serves as inspiration and foundation for its future.

From its roots **SOHAM ENGINEERS** has grown to become the nation's largest MANUFACTURER of premium quality FLEXIBLE SHAFT COUPLINGS.

OUR EXPERIENCE: -SOHAM ENGINEERS is having a vast experience of 16 years, in the field of manufacturing of FLEXIBLE SHAFT COUPLINGS.

OUR INVESTMENT: - Highly skilled and quality devoted staff.

OUR EARNING: - 852 INDIAN and 46 FOREIGN satisfied customers.

OUR CAPACITY: - We are manufacturing 1, 00,000 couplings per annum, this capacity is increasing day by day.

OUR MARKET PLACE: - Worldwide.

OUR SPECIALITY: - Most competitive rates with high quality, timely delivery. We supply in metric as well as Inches size. Also we can manufacture as per customer's requirement and design.

OUR GOAL: - Customer satisfaction

PRODUCT

FLEXIBLE SHAFT COUPLINGS

This shaft coupling connects two shafts to transmit torque, motion etc. It is a coupling which can adjust itself to misalignment of two shafts connected by it. Misalignment may be angular, parallel or skew. When motion transmission is important, the misalignment should not affect the velocity & acceleration of the shaft. This calls for a torsionally rigid, yet flexible coupling. These couplings offer you these advantages using special machining processes. Given in this leaflet are various couplings used in listed applications.

FEATURES:-

- ▶ Aluminium alloy, St. Steel, Brass, Nylon material.
- ▶ Inbuilt flange clamping or set screw clamping.
- ▶ Angular offset up to 5 degrees.
- ▶ Parallel offset up to 0.2mm No Backlash.
- ▶ Constant velocity transmission.
- ▶ Torsionally stiff.
- ▶ One piece construction.

APPLICATION:-

- ▶ Shaft Encoder.
- ▶ Tachogenerator.
- ▶ Stepper & Synchronous motor.
- ▶ Damper Drives.
- ▶ Rotary position transmitter.

OPTIONS:-

- ▶ Different Dia & Bore Sizes.
- ▶ Higher torsional Versions.
- ▶ Different materials.



STANDARD SIZE



Sr.No.	OD D	d1 H7	d2 H7	LENGTH	ORDER CODE
1	20	6	6	28	AS/AF-20-6-6,L=28
2		6	8		AS/AF-20-6-8,L=28
3		6.35	8		AS/AF-20-6.35-8,L=28
4		6	6.35		AS/AF-20-6-6.35,L=28
5		6.35	6.35		AS/AF-20-6.35-6.35,L=28
6	25	6	8	32	AS/AF-25-6-8,L=32
7		6	10		AS/AF-25-6-8,L=32
8		8	8		AS/AF-25-8-8,L=32
9		10	10		AS/AF-25-10-10,L=32
10		6	9.52		AS/AF-25-6-9.52,L=32
11		6	6.35		AS/AF-25-6-6.35,L=32
12		6	10		AS/AF-25-6-10,L=32

Technical Details

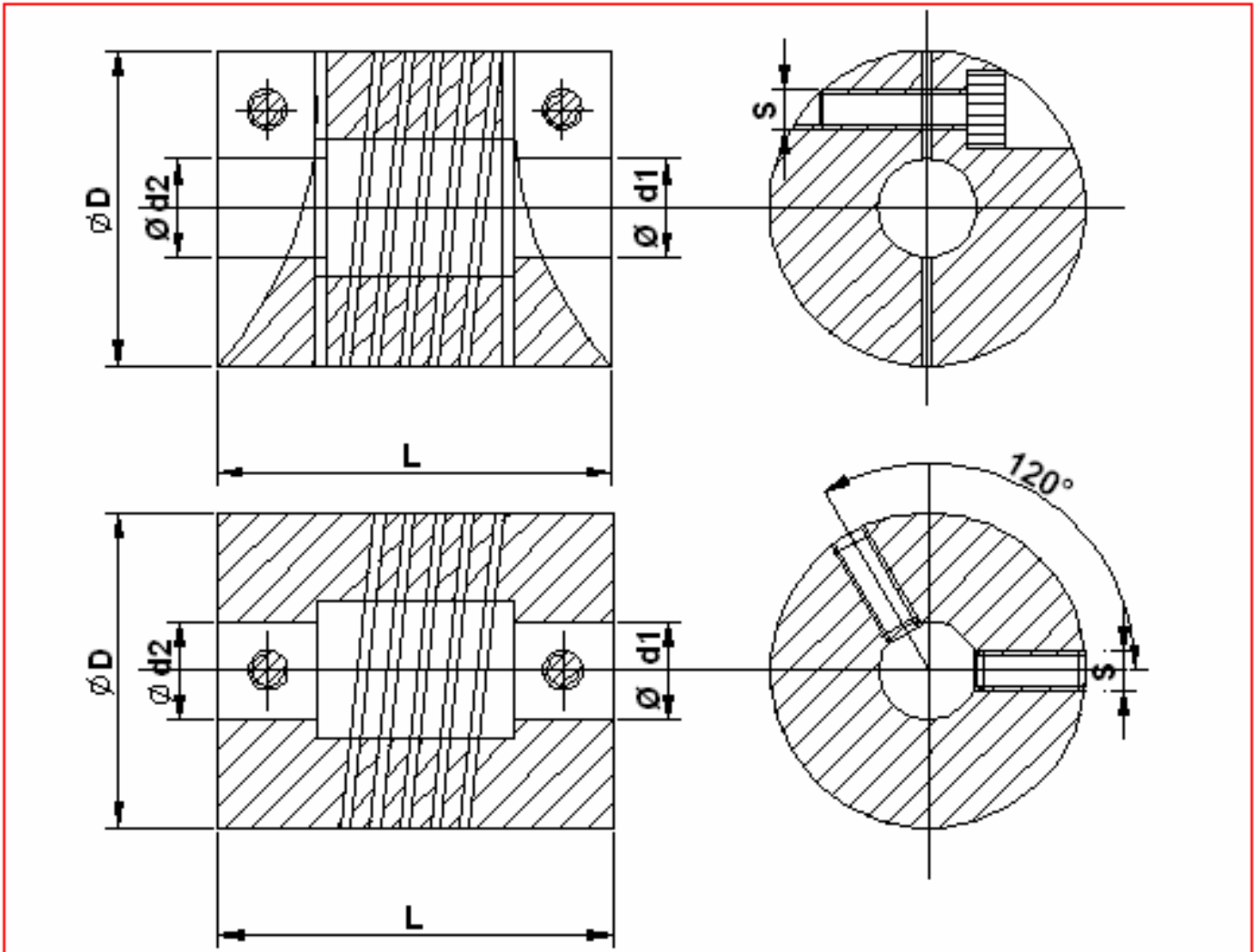


Table 1 AF Type

Table 2 AS Type

D	L	d1/d2 H7	S
14	20	Min 2mm-Max 4mm	M2
16	24	Min 3mm-Max 6mm	M3
20	28	Min 4mm-Max 8mm	M3
25	32	Min 5mm-Max 11mm	M3
32	40	Min 8mm-Max 12mm	M4
35	40/50	Min 10mm-Max 17mm	M4
40	50	Min 11mm-Max 20mm	M5
50	60	Min 12mm-Max 25mm	M5

D	L	d1/d2 H7	S	D
14	20	Min 2mm- Max 4mm	M2	14
16	24	Min 3mm-Max 6mm	M3	16
20	28	Min 4mm-Max 8mm	M3	20
25	32	Min 5mm-Max 11mm	M3	25
32	40	Min 8mm-Max 12mm	M4	32
35	40/50	Min 10mm-Max 17mm	M4	35
40	50	Min 11mm-Max 20mm	M5	40

Technical Details

Table 3

Size	Rated Torque Nm	Max. Shaft Misalignment		Spring Rate		Spring Rate Torsion Nm/rad	Momentum of Inertia	Clamping Screw tightening torque Nm
		Lateral mm	Axial mm	Lateral	Axial			
20	1.4	0.2	0.4	135	150	420	11	2.1
25	25	0.2	0.4	147	158	1350	32	2.1
32	7	0.25	0.45	178	225	2000	88	4.6
35	8.5	0.25	0.45	185	260	2250	99	4.6
40	11	0.25	0.45	210	310	2500	125	6.0
50	25	0.25	0.45	300	450	3000	156	6.0

OUR Certification

CERTIFICATION OF REGISTRATION

AGSI

AGSICERTIFICATION PVT.LTD.

CERTIFICATION

SOHAM ENGINEERS

**19, First Floor, Kamath Industrial Complex, Plot No. 83, General Block,
MIDC, Bhosari, Pune – 411 026. Maharashtra, India.**

*AGSI CERTIFICATION PVT. LTD. issues this certificate to the organization
named above, having assessed and approved the organization's quality management
system and finding the system conforms to the standards of:*

ISO 9001:2000


The Quality Management System is applicable to the following:

**MANUFACTURE & SUPPLY OF
BACKLASH FREE COUPLING FOR
DOMESTIC & EXPORT MARKET**

(Exclusions as detailed in organization's Quality Manual)

*This approval is subject to the organization maintaining its system
to the required standards, which will be monitored by AGSI-CPL.*

Certification Number: 1136
Client File Number: AGSI/Q/870
Date of Issue: 27.03.2007
Date of Expiration: 26.03.2010


On behalf of AGSI-CPL

AGSI CERTIFICATION PVT. LTD.
ROYAL SANDS, "B" WING 102A, 1ST FLOOR, LINK ROAD
SHASTRI NAGAR, BEHIND FAME ADLABS,
ANDHERI WEST, MUMBAI – 400 053
email: agsi@vsnl.net

